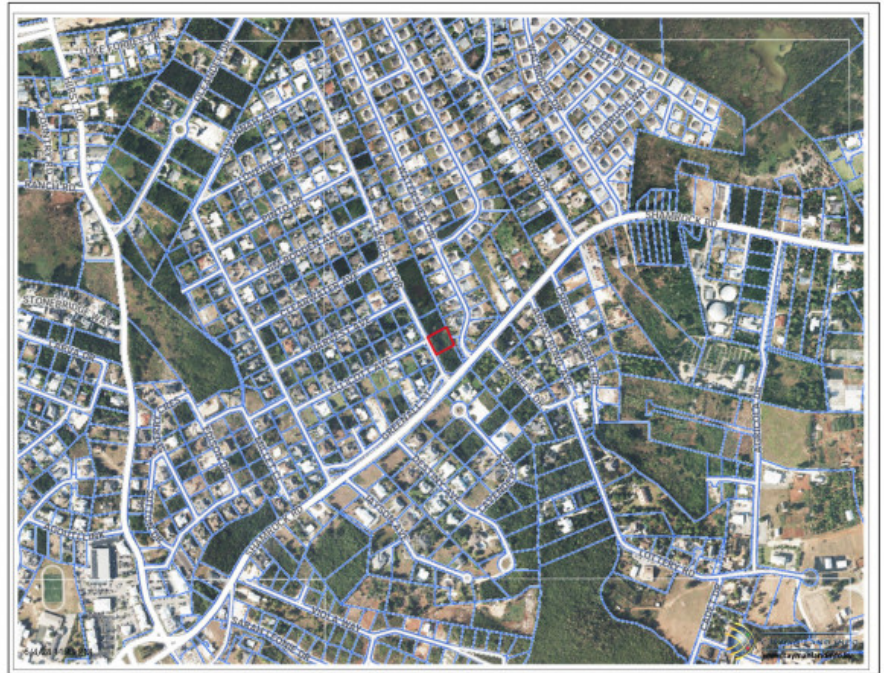
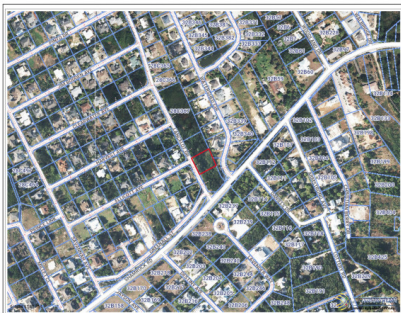


Savannah Meadows Lot

Savannah

MLS# 417826

CI\$225,000



Tammy Crighton-Buck
345-949-5250
tammycb@crightonproperties.com



Dale Crighton
345-949-5250
dalec@crightonproperties.com

Fantastic lot in Savannah Meadows perfect for a residential home for a family or executive. Over 1/3 acre in size with plenty of space for a large yard and pool. Located near Countryside Shopping Village, the beach, restaurants and the Rex Crighton Boulevard. Property in Savannah is attractive for its close proximity to town, activities, schools and amenities. Photos courtesy of caymanlandinfo.ky.

Property Features

Type

Land (For Sale)

Status

Sold

View

Inland

Listing Type Low Density Residential	Width 119.00	Depth 133.00
Sq Ft 0.00	Block/Parcel 28C / 369	Area 40
Acres 0.35		

Building Features

City Water
Yes

Additional Features

Road Surface Asphalt	How Shown Drive by	Soil Other	Topography Level
Zoning Low Density residential	Road Frontage 119	Trees Heavily Wooded	Title Freehold
Frontage Road City Maintained	Possession At Closing	Land Certificate Not Issued	Covenants Yes